



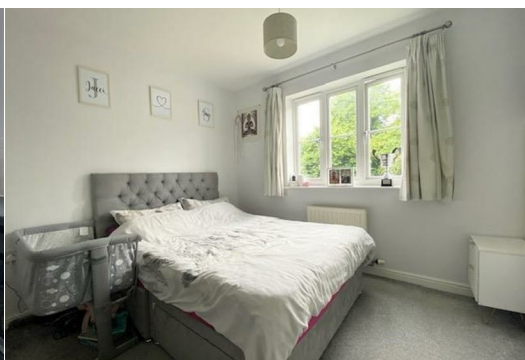
## 5 Regal Place Peterborough PE2 9AP

Guide price £130,000



\*\*\* GUIDE PRICE £130,000 - £135,000 \*\*\* Modern first floor apartment, well presented throughout, located in a sought after development. Accommodation comprises two double bedrooms, en suite to bedroom one, Juliet balcony to bedroom two, kitchen diner with integrated appliances, gas central heating, UPVC double glazing and 4.2m x 3.9m lounge. Outside is an allocated parking space, bike store and communal gardens.

\*\*\* IDEAL FIRST TIME BUY/INVESTMENT PURCHASE \*\*\*



Entrance Hall

Kitchen/Diner 3.11m (10'2") x 2.52m (8'3")

Lounge 4.22m (13'10") max x 3.91m (12'10")

Bathroom

Bedroom 2 2.79m (9'2") x 2.52m (8'3")

Balcony 1.45m (4'9") x 0.22m (0'9")

Bedroom 1 4.22m (13'10") x 1.85m (6'1")

En-suite

OUTSIDE

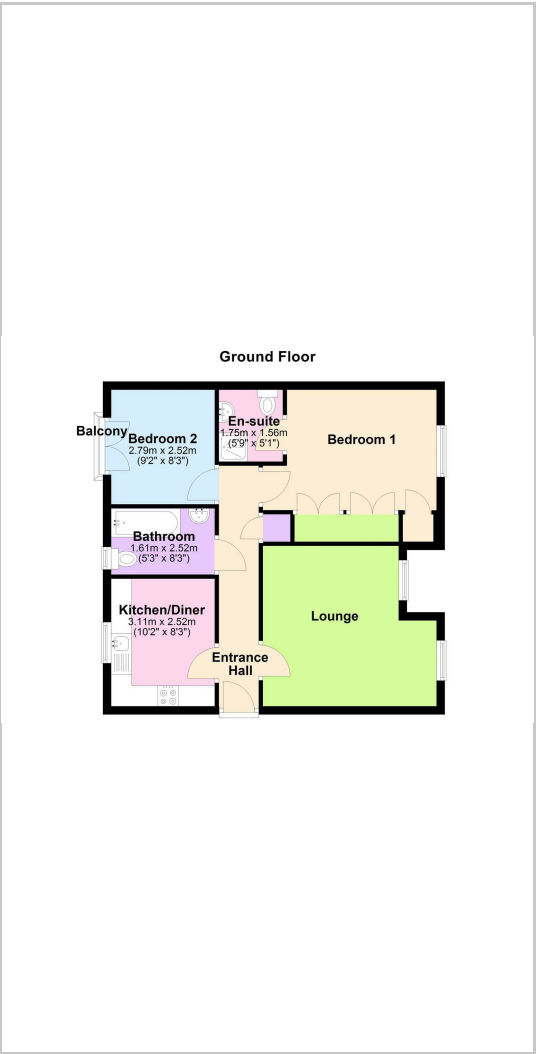
Communal gardens. Allocated parking space. Bike shed.

\*\*\* If you are considering letting this property for a BUY TO LET please call Fitzjohn Property Rentals on 01733 555520. We can provide you free advice on all aspects of the lettings market including potential rental yields for this property \*\*\*

Area Map



Floor Plans



Energy Efficiency Graph

